



CUSTOMER TESTIMONIAL



Business Bio Fuels Ltd (BBF)
Mr B Parkinson
Unit 5 International Base
Aberdeen
Scotland
AB12 3AX
Tel: 01224 878885

REGARDING CHEMIPHASE COLDFLOW 350 AND BIOBOOST 1000

Business Bio Fuels is a new renewable transport energy company using used cooking oil and converting this into renewable fuel – Biodiesel.

Currently there is no other company producing Biodiesel in the local area despite the growing demand for cheaper renewable energy. BBF is the 1st commercial biodiesel producer and filling station in the north east of Scotland to provide this fuel and has generated good business from various markets in Aberdeen.

BBF has been supplying fuel to its local council authority, haulage, dairy, farmers and general public for 4 years.

Business Bio Fuels based in Scotland was always going to be challenged to provide biodiesel that would perform and compete with regular diesel in its colder climate and thanks to Chemiphase, BBF has been able to achieve just that.

BBF found from day one with their own testing that they were going to have problems convincing local people and companies to use their fuel without supplying a fuel that would compete with the regular diesel.

With that in mind BBF considered it very important that they produced a fuel that would not cause a problem in its colder climate and produce the same miles per gallon to regular diesel.

BBF contacted Chemiphase from the start to supply additives in order to battle the colder weather and combat the 12% lower cetane values of biodiesel compared to regular diesel. BBF found Chemiphase very helpful and informative regarding the use of additives and even with other unrelated issues of the process.

www.chemiphase.co.uk

Phone :

+44 (0) 8456 432900

Email :

sales@chemiphase.co.uk

An RSI Company

www.rsinl.eu



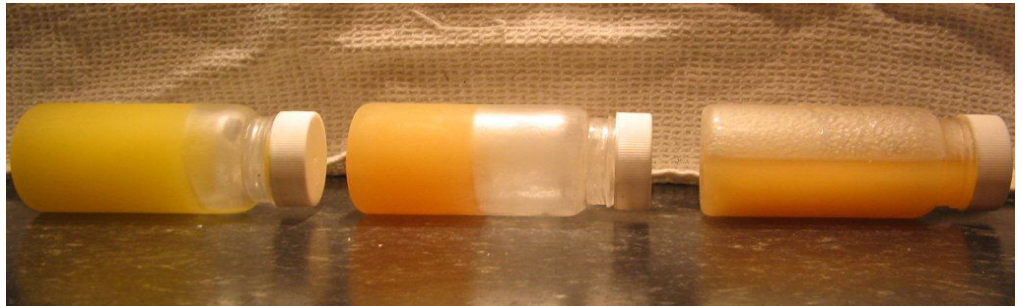
COLDFLOW TEST

Bev Parkinson the Director of BBF placed three half filled sample bottles into a freezer for a whole weekend at -15 degrees Celsius from Friday night through to Monday morning.

See Picture below:

- Sample: 1 (left) on picture regular diesel
 Sample: 2 (middle) untreated biodiesel rated to -6 CFPP
 Sample: 3 (right) 3.5 ltr added to a 1000ltr batch Chemiphase Coldflow 350

Monday morning he removed the half filled sample bottle from the freezer and immediately put them horizontal on there sides and took the photo. Bev was astonished to see that the Coldflow did exactly what it said it would do on the tin and even out preformed the regular diesel. Out of the three samples the only one still in liquid form was the Chemiphase Coldflow 350 treated sample.



BBF undertook further testing on its own vehicles using the cold flow 350 in temperatures of minus 18 degrees and found starting in the mornings where no problem.

After being so impressed with the results of the Chemiphase Coldflow 350 and the companies professional approach to BBF as a valued customer with its speedy delivery and prompt service, BBF decided to try the cetane enhancer BIOBOOST.

After several weeks BBF customers were commenting on better miles per gallon and faster vehicles, just simply not believing the performance increases and asking how we do it.

BBF is very conscious of supplying a quality fuel to its customers and so uses filtertechnik polishing pods to continuously polishes its fuel (on average 12hours per day) while in its storage

tanks placed before its dispensing pumps.

BBF asked filtertechnik and Chemiphase if the polishing pods would remove the two additives as it filters down to 1 micron and both companies were unsure if it would filter out or not. BBF can confirm that the Chemiphase additives are not significantly filtered out of the fuel and are suitable for this application.

Mr B Parkinson director of BBF confirms that the Company have been very impressed with its results, he thanks Ben of Chemiphase for his help and will continue to use Chemiphase additives for the foreseeable future.

He would also highly recommend the use of Chemiphase additives and would welcome any other biodiesel producer big or small to get in touch for hands on experience advice on the additives that may be needed.